

WELCOME BACK TO

# Summer of Drawing



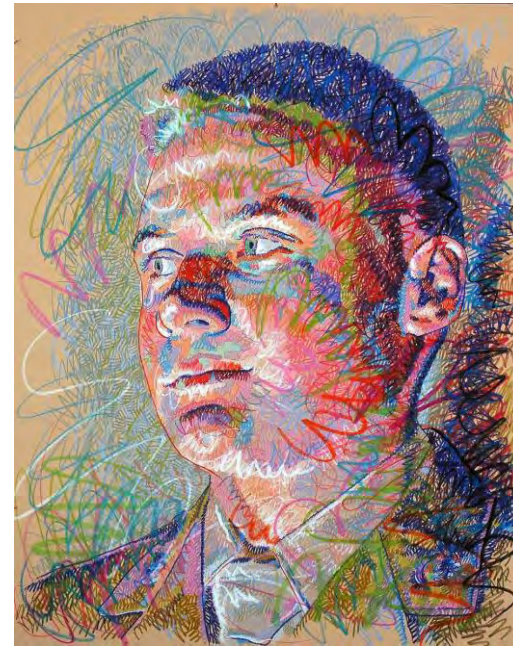
class no.17: ALL MEDIA FOLDS & ANIMALS



Lui Ferreyra

**Idioma 8**  
*colored pencil*

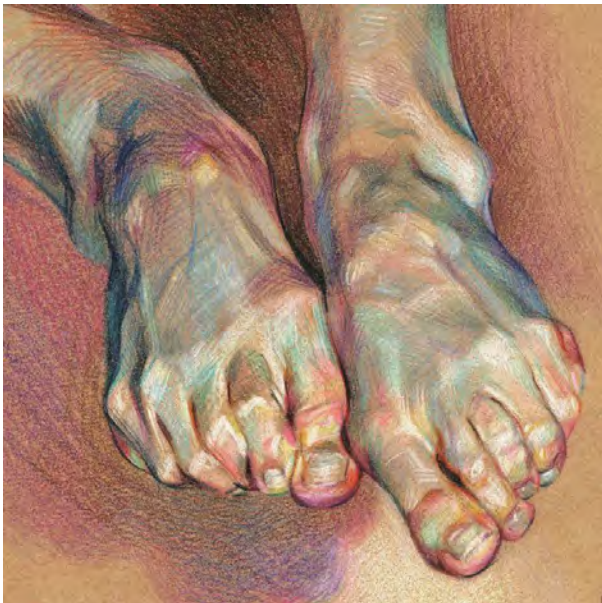
[www.luiferreyra.com](http://www.luiferreyra.com)



John Smolko

*Colored pencil*

[www.johnsmolko.com](http://www.johnsmolko.com)



WanJin Gim

<https://wooarts.com/wanjin-gim/>



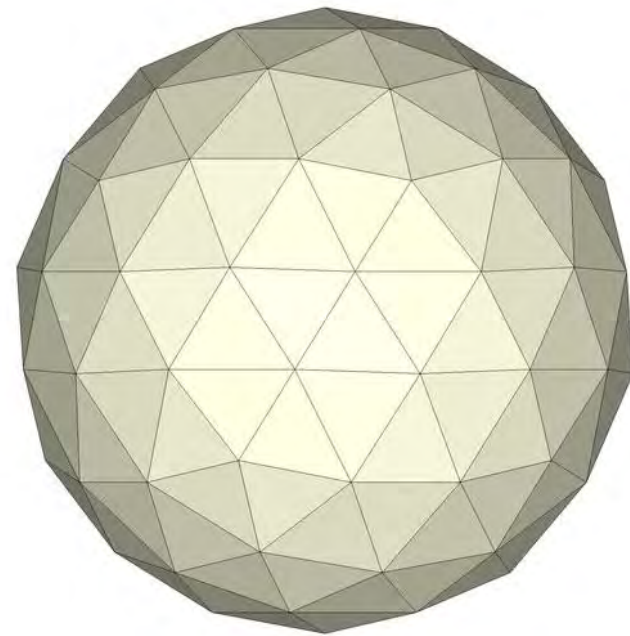
Per Adolfsen

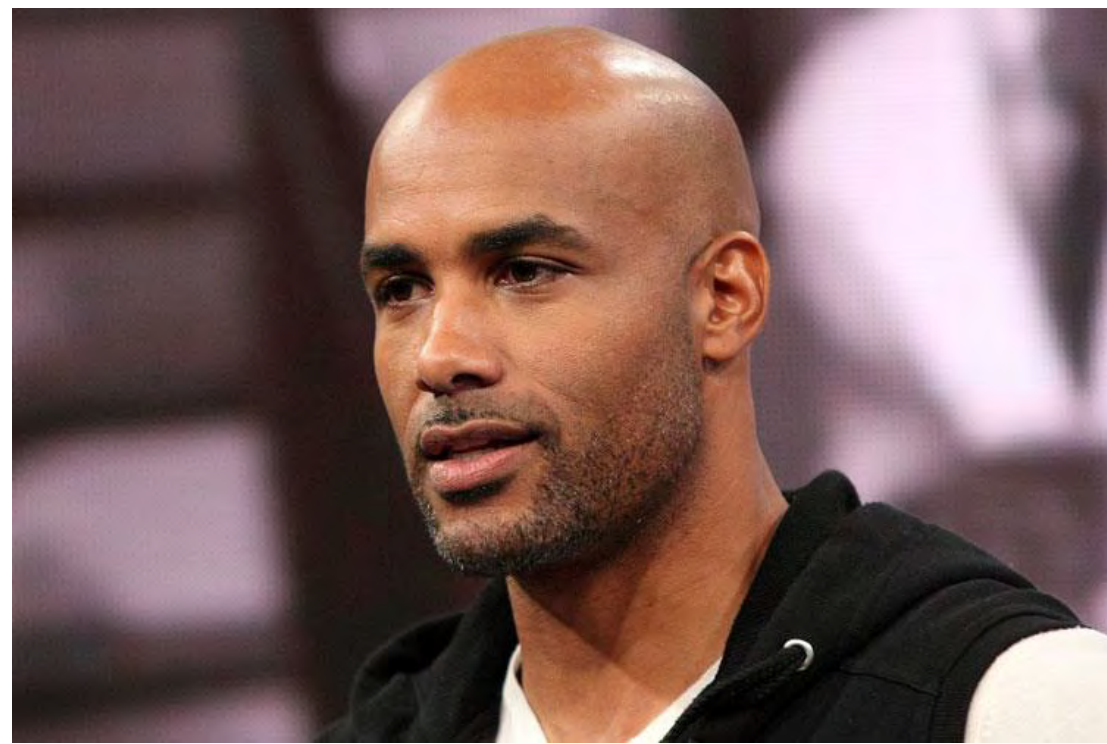
**The Big Tree in the Kindergarten**

*Graphite, Colored Pencil*  
23 3/5 × 16 1/2 in

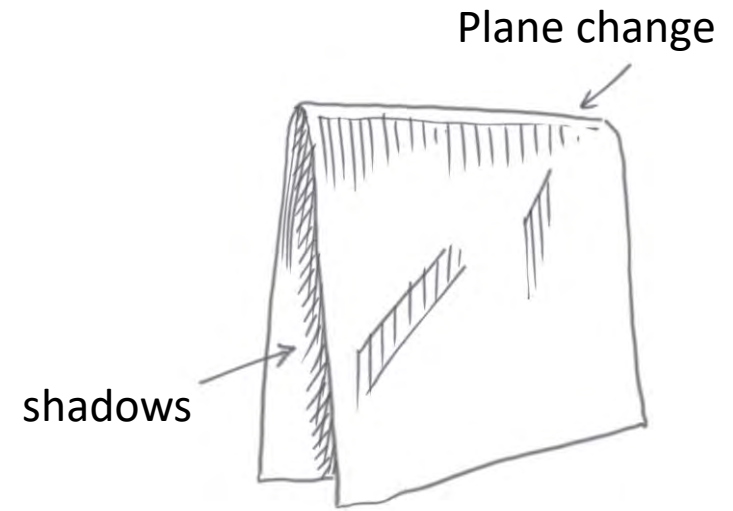
@peradolfsen\_artist

# Planes









How fabric falls in folds is affected by:

GRAVITY  
OBSTRUCTIONS

How it appears to us is affected by the SOURCES OF LIGHT.



How fabric falls in folds is affected by:

GRAVITY

OBSTRUCTIONS

How it appears to us is affected by the SOURCES OF LIGHT.



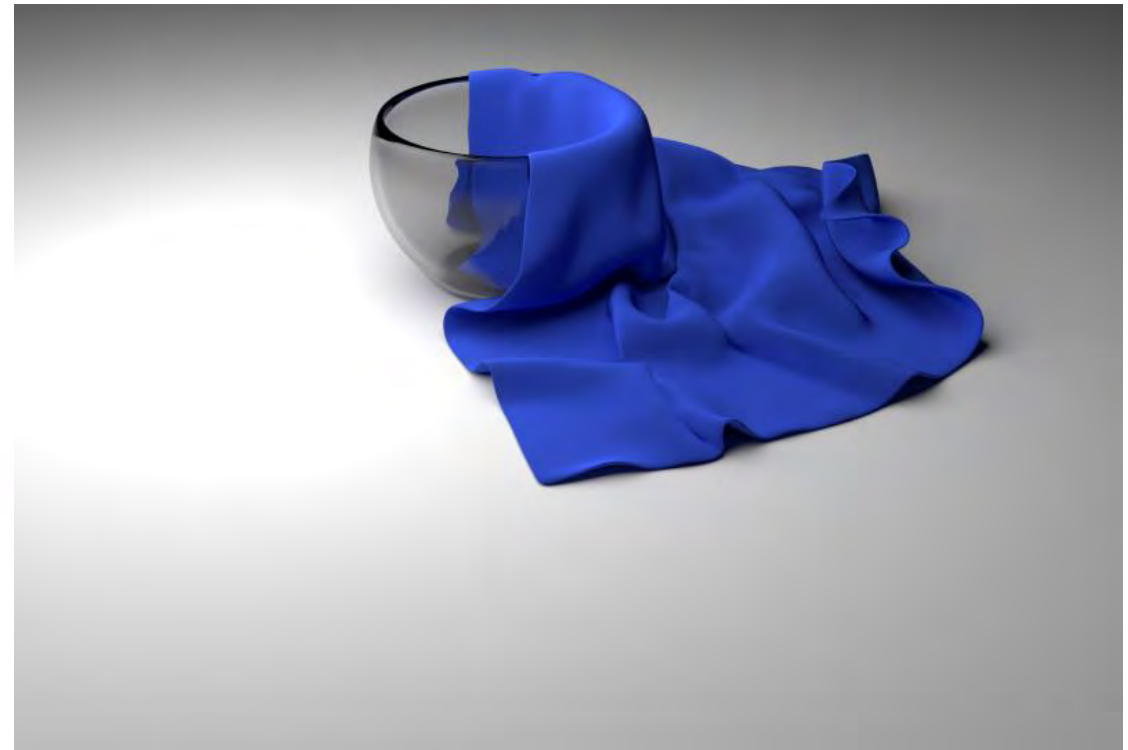
How fabric falls in folds is affected by:

GRAVITY

OBSTRUCTIONS

How it appears to us is affected by the SOURCES OF LIGHT.





How fabric falls in folds is affected by:

GRAVITY

OBSTRUCTIONS

How it appears to us is affected by the SOURCES OF LIGHT.



“If you don’t know what to do with it, get rid of it. If it seems obvious, keep it.” – Mike Hernandez

“This is where a notan can help.” 😊  
- Elizabeth Whelan

